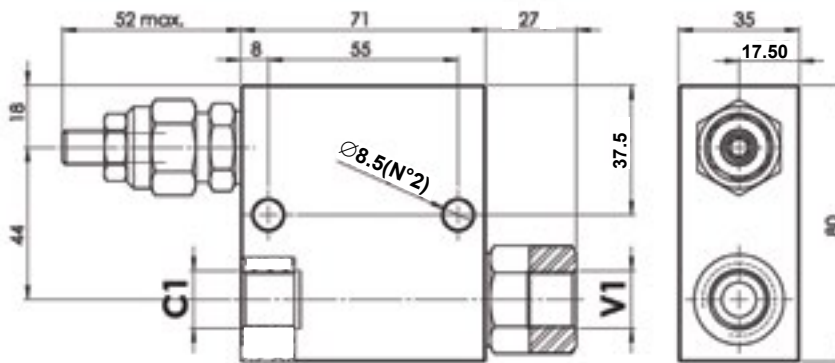
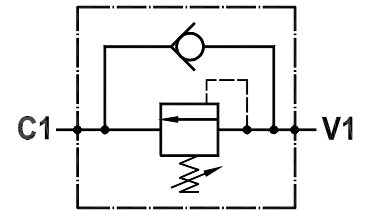
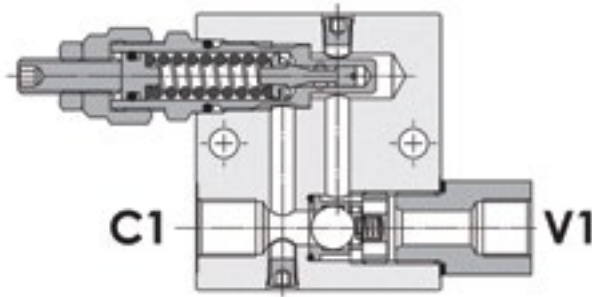


# SEQUENCE VALVES

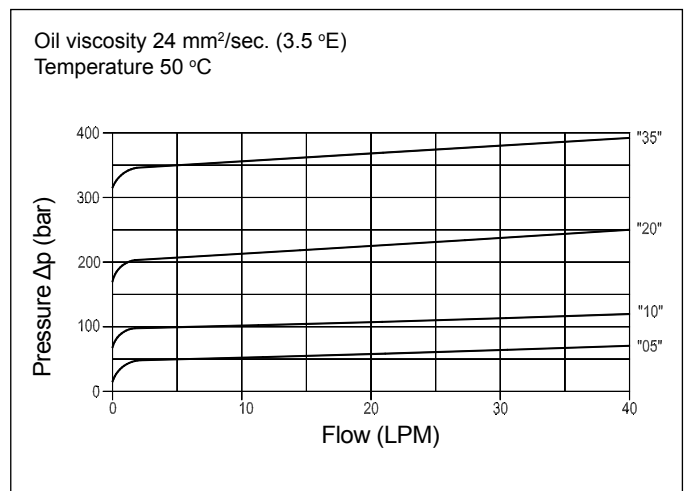
Line Mounted Direct Acting Sequence Valve  
FPSQ-D-30-CB-P-3/8-10



## Technical Specifications

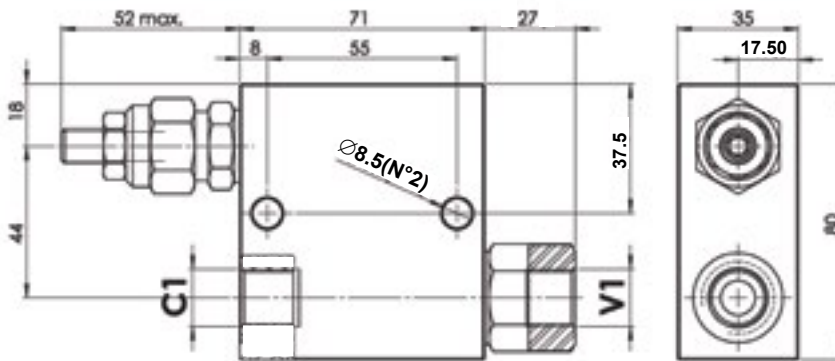
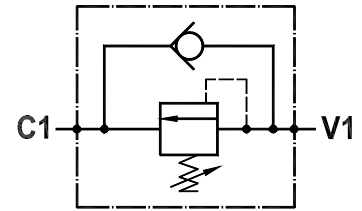
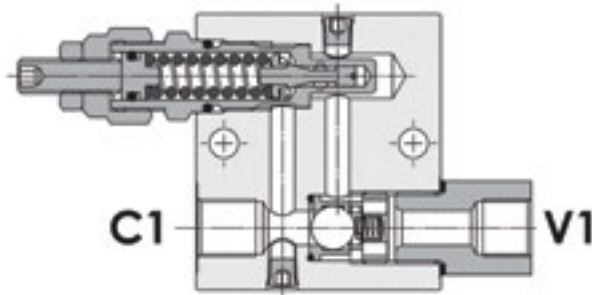
<b>Materials</b>	Cartridge = steel, zinc plated Internal parts = hardened steel Body = high strength alloy
<b>Rated Flow</b>	40 LPM
<b>Adjustment Range</b>	30-100 bar
<b>Standard Setting</b>	30 bar
<b>Pressure Inc. Per Turn</b>	20 bar
<b>Max. Setting</b>	100 bar
<b>Max. Pressure</b>	210 bar
<b>Weight</b>	0.735 kg
<b>Port Sizes</b>	C1/V1 = G3/8
<b>Adjustment Type</b>	Leakproof screw
<b>Oil Temperature Range</b>	-20°C + 80°C
<b>Recommended Filtration</b>	Nominal max. 10µ, ISO 4406-19/17/14 (NAS8) or less
<b>Ambient Temperature Range</b>	-30°C + 60°C

## Pressure Drop Curves



# SEQUENCE VALVES

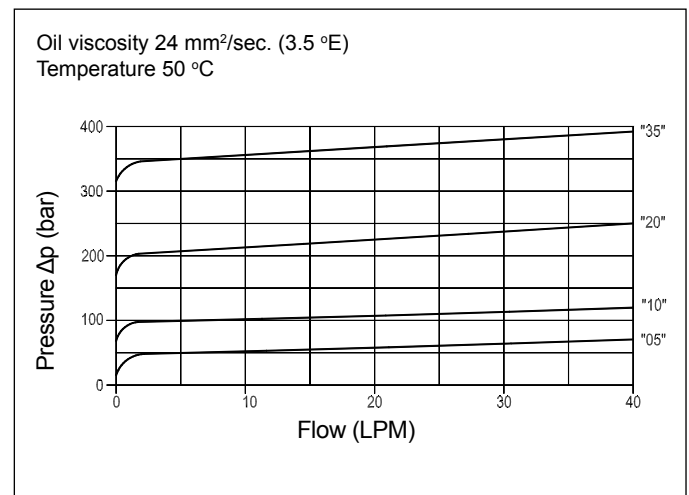
Line Mounted Direct Acting Sequence Valve  
FPSQ-D-30-CB-P-3/8-20



## Technical Specifications

<b>Materials</b>	Cartridge = steel, zinc plated Internal parts = hardened steel Body = high strength alloy
<b>Rated Flow</b>	40 LPM
<b>Adjustment Range</b>	50-200 bar
<b>Standard Setting</b>	50 bar
<b>Pressure Inc. Per Turn</b>	40 bar
<b>Max. Setting</b>	220 bar
<b>Max. Pressure</b>	210 bar
<b>Weight</b>	0.735 kg
<b>Port Sizes</b>	C1/V1 = G3/8
<b>Adjustment Type</b>	Leakproof screw
<b>Oil Temperature Range</b>	-20°C + 80°C
<b>Recommended Filtration</b>	Nominal max. 10 $\mu$ , ISO 4406-19/17/14 (NAS8) or less
<b>Ambient Temperature Range</b>	-30°C + 60°C

## Pressure Drop Curves

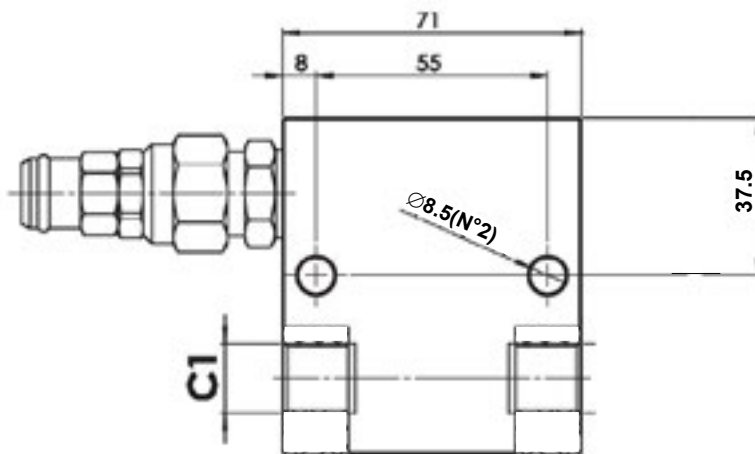
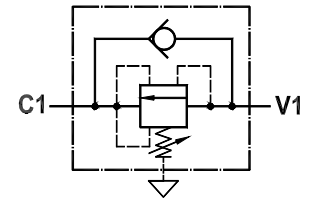
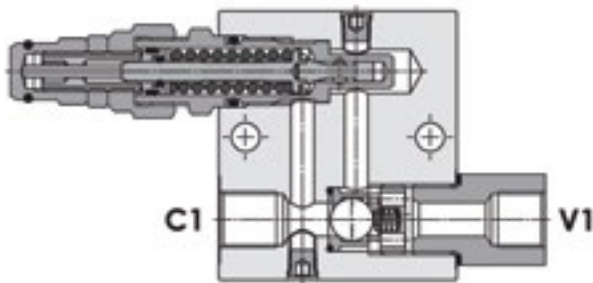




FLUID-PRESS

# SEQUENCE VALVES

Line Mounted, Fully Balanced, Direct Acting Sequence Valve  
FPSQB-D-30-CB-1/2-10



## Technical Specifications

<b>Materials</b>	Cartridge = steel, zinc plated Internal parts = hardened steel Body = high strength alloy
<b>Rated Flow</b>	40 LPM
<b>Adjustment Range</b>	30-100 bar
<b>Standard Setting</b>	30 bar
<b>Pressure Inc. Per Turn</b>	20 bar
<b>Max. Pressure</b>	210 bar
<b>Weight</b>	0.800 kg
<b>Port Sizes</b>	C1/V1 = G1/2
<b>Adjustment Type</b>	Leakproof screw
<b>Oil Temperature Range</b>	-20°C + 80°C
<b>Recommended Filtration</b>	Nominal max. 10µ, ISO 4406-19/17/14 (NAS8) or less
<b>Ambient Temperature Range</b>	-30°C + 60°C

## Pressure Drop Curves

