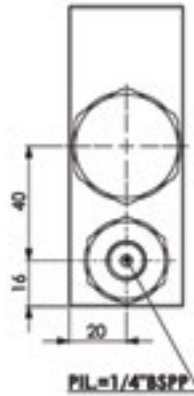
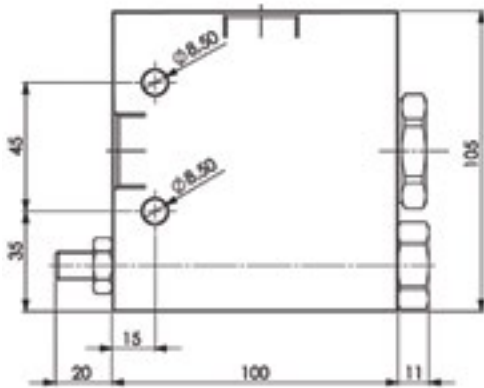
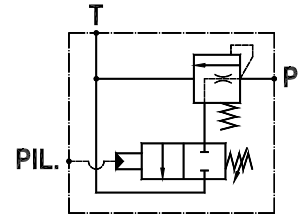
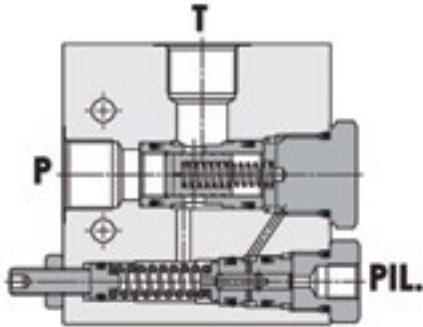


# UNLOADING VALVES

Line Mounted, Pilot Operated Unloading Valve  
FPMS-P-1/2-20



## Technical Specifications

<b>Materials</b>	Cartridge = steel, zinc plated Internal parts = hardened steel Body = high strength alloy
<b>Rated Flow</b>	150 LPM
<b>Adjustment Range</b>	50-200 bar
<b>Standard Setting</b>	200 bar
<b>Pressure Inc. Per Turn</b>	50 bar
<b>Max. Setting</b>	220 bar
<b>Max. Pressure</b>	210 bar
<b>Weight</b>	1.350 kg
<b>Port Sizes</b>	P/T = G1/2 PIL = G1/4
<b>Adjustment Type</b>	Leakproof screw
<b>Oil Temperature Range</b>	-20°C + 80°C
<b>Recommended Filtration</b>	Nominal max. 10µ, ISO 4406-19/17/14 (NAS8) or less
<b>Ambient Temperature Range</b>	-30°C + 60°C

## Pressure Drop Curves

